

Professional Development Symposium



Join area education, park & recreation and landscape architecture professionals for a complimentary educational symposium on play!

Presented by the:

PlayCore Center for Professional Development

Agenda & Session Information

Please click session title for summary/learning outcomes

10:00-10:30 a.m.- Registration & Refreshments

10:30 a.m.-12:00 p.m.- Education Session #1

[Words on Play: Making Play a Priority in Communities](#)

CEUs: .15

12:00-12:45 p.m.- Lunch provided by :

GameTime and SiteLines Park & Playground Products

12:45-2:15 p.m.- Education Session #2

[Blueprint for Play: Building Communities Through Play & Recreation Initiatives](#)

CEUs: .15

2:15-2:30 p.m.- Grants & Funding Options

**Webinar access available for remote participants*

Choose your location!

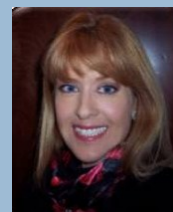
January 29, 2013- Fairbanks, AK

Pioneer Park Exhibit Hall

OR

January 30, 2013- Anchorage, AK

Spenard Recreation Center



Featured Master Trainer:

[Anne-Marie Spencer](#)

Please RSVP and send questions/special requests to Sandy Burleson

EMAIL: sandy@sitelines.com

PHONE: (800) 541-0869



Lunch, educational resources, and continuing education certificates will be provided.

CEUs provided for a total of 3 professional contact hours/ .3 CEUs

Hosted by:



Sponsored by:

